

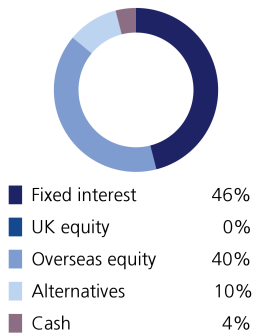
Sustainable Model Portfolio Service

In partnership with LGT Wealth Management

December 2024

EPIM Sustainable Cautious

Asset allocation



Top 10 holdings

Trojan Ethical	10.00%
Vontobel Sustainable Short Term Bond	10.00%
Brown Advisory Global Sustainable Total	8.00%
AB Sustainable US Thematic Equity	6.50%
Rathbone Ethical Bond	6.00%
L&G Global Inflation Linked	5.50%
Threadneedle UK Social Bond	5.00%
Morgan Stanley Global Sustain	4.50%
Lazard Global Sustainable Equity Fund	4.50%
Janus Henderson Global Sustainable Equity	4.50%

Portfolio information

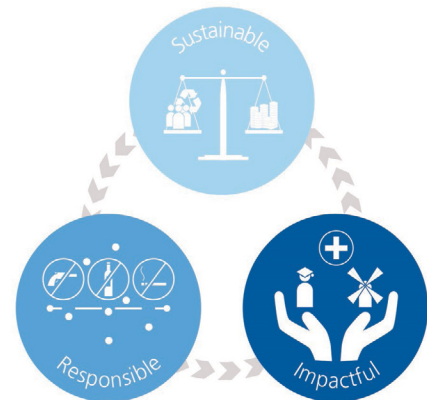
Launch date	1 June 2020
Minimum cash holding	2%
Annual management charge	0.3%
Total Cost of Investment	0.55%

Portfolio description

The primary objective of this portfolio is to achieve a moderate level of capital growth. The portfolio is diversified across a range of asset classes with low-to medium allocation to funds investing in equities (expected to be no greater than 55%) and other risk assets. Target Volatility: 4%-7%

Sustainable philosophy

The ultimate goal of the portfolio is to support more inclusive social and economic development and more sustainable environmental and business practices, whilst generating strong and consistent investment returns. The portfolio will aim to achieve this by investing in a diversified range of funds which include themes such as renewable energy, financial inclusion, education, social housing, climate change action, sustainable waste management and renewable material production.



Monthly investment update

December concluded a politically turbulent year marked by significant global shifts. European instability intensified as France and Germany's governments collapsed, and martial law was declared in South Korea, spurring protests. These events underscored a global appetite for change, setting a transformative tone for 2025.

Equity markets faced volatility in December; the S&P 500 dipped 2.4% in December but closed 2024 with a 25% gain. Technology stocks continued to dominate, with the Magnificent 7 surging 6.3%. In contrast, interest rate-sensitive sectors struggled as bond yields climbed. The Russell 2000 fell over 8% in December, though it ended the year up 11.5%. European markets were mixed; French equities benefitted from Chinese stimulus which boosted luxury goods, while the FTSE 100 and EuroStoxx 600 underperformed.

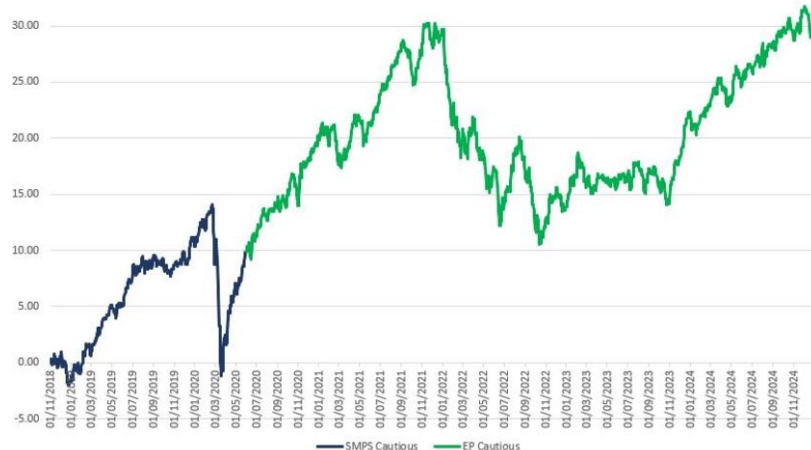
The US Federal Reserve cut rates for a third time in 2024 but signalled a slower pace ahead amid Trump's deregulatory agenda. The Bank of England held rates steady at 4.75%, balancing inflation concerns and a softening economy. Meanwhile, the ECB is preparing continued rate cuts as Germany grapples with recessionary pressures. Trump's return to power promises policy shifts, including tariffs and deregulation, with uncertain economic consequences. Amid these challenges, the focus remains on resilient businesses and long-term strategies to navigate global instability effectively.

Powered by



**Wealth
Management**

Performance



As at end of December 2024

1 month	-1.39%
3 month	0.00%
6 month	2.51%
1 year	5.83%
3 year	-0.14%

	Target
Volatility	4 to 7%
Return	4.5 to 6%
Potential drawdown	-9.1%

	Yield
Assumed yield	2.04%
Dividend	50%
Savings	50%

Source: Morningstar

Where targets are given, these are for indication purposes only; the actual figures achieved could be more or less than the ranges given. Source: Morningstar. Net of underlying fund costs, gross of all other charges. Source: Figaro. Fixed income considered saving income, all other asset classes (bar cash) considered dividend income.

Important information

The performance of actual portfolios linked to this Model Portfolio may differ from the performance of the Model Portfolio shown herein due to certain funds contained in the Model Portfolios not being made available for investment into actual portfolios by some investment platforms, the variation in timing of the initial investment or rebalancing differences resulting from minimum transaction size limits on the investment platform.

The Model Portfolio Service is not a financial instrument. The portfolio will consist of financial instruments, which when considered together as the Model Portfolio Service have a target market consistent with the needs of retail clients. This publication is marketing material. It is for information purposes only. The information presented herein is for illustrative purposes only and does not provide sufficient information on which to make an informed investment decision. This document is not intended and should not be construed as an offer, solicitation or recommendation to buy or sell any specific investments or participate in any investment (or other) strategy. It is recommended that potential investors should seek advice concerning the suitability of any investment from their Financial Adviser. Potential investors should be aware that past performance is not an indication of future performance and the value of investments and the income derived from them may fluctuate and they may not receive back the amount they originally invested. The tax treatment of investments depends on each investor's individual circumstances and is subject to changes in tax legislation. The Ongoing Charge Figure is variable and is for example purposes only. The information in this factsheet is for private circulation only and though it is believed to be correct it cannot be guaranteed. No representation or warranty (express or otherwise) is given as to the accuracy or completeness of the information contained in this factsheet and LGT Wealth Management UK LLP ("LGT Wealth Management") and its partners and employees accept no liability for the consequences of your acting upon the information contained herein.

LGT Wealth Management UK LLP is a Limited Liability Partnership registered in England and Wales. Registration number OC329392. LGT Wealth Management is authorised and regulated by the Financial Conduct Authority and is a member of the London Stock Exchange.

Eden Park Investment Management Limited is authorised and regulated by the Financial Conduct Authority. A Registered in England number 10953727. Registered office: The Pavilions, Eden Park, Ham Green, Bristol, BS20 0DD.