

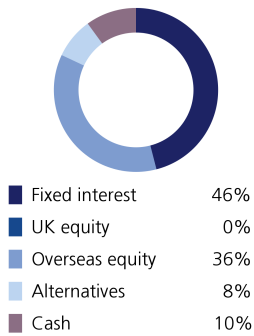
Sustainable Model Portfolio Service

In partnership with LGT Wealth Management

May 2024

EPIM Sustainable Cautious

Asset allocation



Top 10 holdings

Vontobel Sustainable Short Term Bond	9.00%
Trojan Ethical	8.50%
Brown Advisory Global Sustainable Total	6.00%
L&G Global Inflation Linked	5.50%
AB Sustainable US Thematic Equity	5.00%
Rathbone Ethical Bond	5.00%
ICS Sterling Liquidity	4.00%
Federated Hermes Short-Term Sterling	4.00%
Morgan Stanley Global Sustain	4.00%
Lazard Global Sustainable Equity Fund	4.00%

Portfolio information

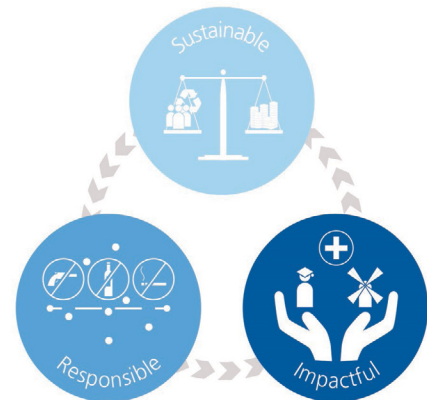
Launch date	1 June 2020
Minimum cash holding	2%
Annual management charge	0.3%
Total Cost of Investment	0.53%

Portfolio description

The primary objective of this portfolio is to achieve a moderate level of capital growth. The portfolio is diversified across a range of asset classes with low-to medium allocation to funds investing in equities (expected to be no greater than 55%) and other risk assets. Target Volatility: 4%-7%

Sustainable philosophy

The ultimate goal of the portfolio is to support more inclusive social and economic development and more sustainable environmental and business practices, whilst generating strong and consistent investment returns. The portfolio will aim to achieve this by investing in a diversified range of funds which include themes such as renewable energy, financial inclusion, education, social housing, climate change action, sustainable waste management and renewable material production.



Monthly investment update

In May, we witnessed equities rebound before relinquishing some of their gains at the end of the month. Meanwhile, the UK's election timetable shifted from Autumn to the Summer, earlier than many expected. Markets remained calm, largely due to Labour's limited fiscal headroom which restricts their ability to significantly raise spending, implying limited change from the current government.

As investors grappled with higher-than-expected inflation print in April and its implications for rate cuts this year, May brought some much needed relief. Softer economic data, coupled with a moderate US CPI reading of 3.4%, reassured investors that inflation is trending down.

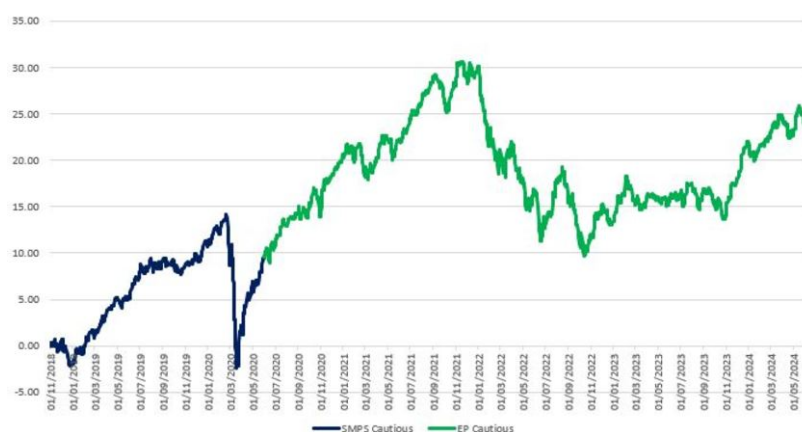
Although US stocks continued to rally, finishing up the month up 5%, it was not just a story about the Magnificent 7. Global stock markets also posted solid performance despite a soft dollar, indicating markets are more upbeat on global growth prospects. In the UK, the FTSE 100 rose 2%, buoyed by its commodity and financial companies. The Eurostoxx 600 gained 3.5%, while Hong Kong's Hang Seng index rose 2.5%.

Powered by



**Wealth
Management**

Performance



Source: Morningstar

As at end of May 2024

1 month	1.03%
3 month	1.27%
6 month	5.47%
1 year	7.52%
3 year	1.77%

Target

Volatility	4 to 7%
Return	4.5 to 6%
Potential drawdown	-9.1%

Yield

Assumed yield	1.98%
Dividend	44%
Savings	56%

Where targets are given, these are for indication purposes only; the actual figures achieved could be more or less than the ranges given. Source: Morningstar. Net of underlying fund costs, gross of all other charges. Source: Figaro. Fixed income considered saving income, all other asset classes (bar cash) considered dividend income.

Important information

The performance of actual portfolios linked to this Model Portfolio may differ from the performance of the Model Portfolio shown herein due to certain funds contained in the Model Portfolios not being made available for investment into actual portfolios by some investment platforms, the variation in timing of the initial investment or rebalancing differences resulting from minimum transaction size limits on the investment platform.

The Model Portfolio Service is not a financial instrument. The portfolio will consist of financial instruments, which when considered together as the Model Portfolio Service have a target market consistent with the needs of retail clients. This publication is marketing material. It is for information purposes only. The information presented herein is for illustrative purposes only and does not provide sufficient information on which to make an informed investment decision. This document is not intended and should not be construed as an offer, solicitation or recommendation to buy or sell any specific investments or participate in any investment (or other) strategy. It is recommended that potential investors should seek advice concerning the suitability of any investment from their Financial Adviser. Potential investors should be aware that past performance is not an indication of future performance and the value of investments and the income derived from them may fluctuate and they may not receive back the amount they originally invested. The tax treatment of investments depends on each investor's individual circumstances and is subject to changes in tax legislation. The Ongoing Charge Figure is variable and is for example purposes only. The information in this factsheet is for private circulation only and though it is believed to be correct it cannot be guaranteed. No representation or warranty (express or otherwise) is given as to the accuracy or completeness of the information contained in this factsheet and LGT Wealth Management UK LLP ("LGT Wealth Management") and its partners and employees accept no liability for the consequences of your acting upon the information contained herein.

LGT Wealth Management UK LLP is a Limited Liability Partnership registered in England and Wales. Registration number OC329392. LGT Wealth Management is authorised and regulated by the Financial Conduct Authority and is a member of the London Stock Exchange.

Eden Park Investment Management Limited is authorised and regulated by the Financial Conduct Authority. A Registered in England number 10953727. Registered office: The Pavilions, Eden Park, Ham Green, Bristol, BS20 0DD.