

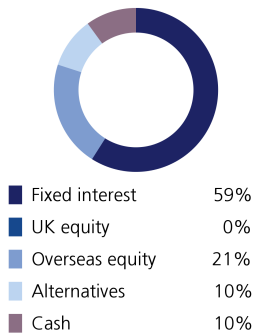
Sustainable Model Portfolio Service

In partnership with LGT Wealth Management

September 2024

EPIM Sustainable Defensive

Asset allocation



Top 10 holdings

Vontobel Sustainable Short Term Bond	10.00%
Trojan Ethical	10.00%
Vanguard US Govt Bond Index	7.00%
Brown Advisory Global Sustainable Total	6.00%
Rathbone Ethical Bond	6.00%
L&G Global Inflation Linked	5.50%
Threadneedle UK Social Bond	5.00%
CG Dollar	4.50%
ICS Sterling Liquidity	4.30%
Federated Hermes Short-Term Sterling	4.00%

Portfolio information

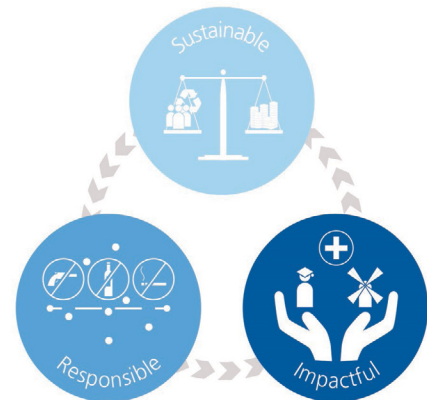
Launch date	1 June 2020
Minimum cash holding	2%
Annual management charge	0.3%
Total Cost of Investment	0.47%

Portfolio Objectives

The primary objective of this portfolio is to preserve capital. The portfolio is diversified across a range of asset classes but with a low overall allocation to funds investing in equities (expected to be no greater than 40%) and other risk assets. Target Volatility: 2%-4.75%

Sustainable philosophy

The ultimate goal of the portfolio is to support more inclusive social and economic development and more sustainable environmental and business practices, whilst generating strong and consistent investment returns. The portfolio will aim to achieve this by investing in a diversified range of funds which include themes such as renewable energy, financial inclusion, education, social housing, climate change action, sustainable waste management and renewable material production.



Monthly investment update

September saw the Federal Reserve finally cut rates by 50 basis points to support the economy, justified by easing inflation and softer economic data. Despite a softer jobs report, the US labour market remains stable, with wage growth aligning with inflation targets and many analysts now expect a soft landing for the US economy. In Europe, further rate cuts could support growth, and the pound hit its highest level against the dollar since March 2022.

China's recent economic stimulus has sparked a surge in both Asian and global markets. The People's Bank of China surprised investors by implementing bold measures aimed at reviving economic growth. Following these actions, Hong Kong and Chinese stock indices rallied significantly, reflecting renewed optimism.

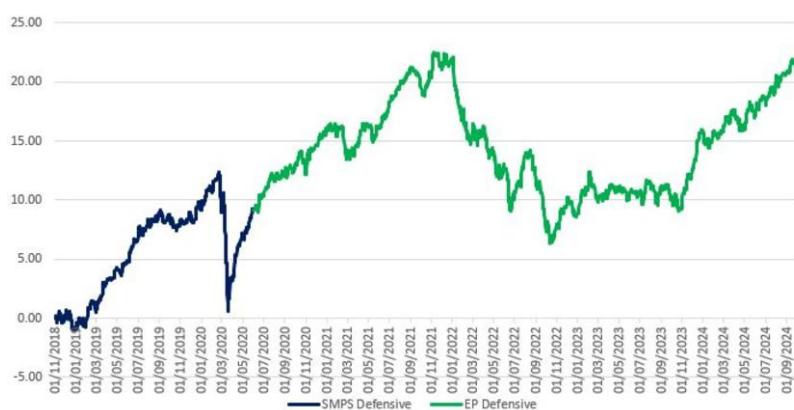
Overall, moderating inflation and central bank rate cuts are paving the way for a smoother economic transition, though investors remain focused on interest rate policy and the upcoming US election. Finally, the ripple effects of China's stimulus are being felt globally, with rising demand in sectors like commodities, construction, and luxury goods.

Powered by



**Wealth
Management**

Performance



Source: Morningstar

As at end of September 2024

1 month	0.65%
3 month	2.64%
6 month	3.37%
1 year	10.23%
3 year	1.65%
	Target
Volatility	2 to 4.75%
Return	3 to 4.5%
Potential drawdown	-5.0%
	Yield
Assumed yield	2.20%
Dividend	31%
Savings	69%

Where targets are given, these are for indication purposes only; the actual figures achieved could be more or less than the ranges given. Source: Morningstar. Net of underlying fund costs, gross of all other charges. Source: Figaro. Fixed income considered saving income, all other asset classes (bar cash) considered dividend income.

Important information

The performance of actual portfolios linked to this Model Portfolio may differ from the performance of the Model Portfolio shown herein due to certain funds contained in the Model Portfolios not being made available for investment into actual portfolios by some investment platforms, the variation in timing of the initial investment or rebalancing differences resulting from minimum transaction size limits on the investment platform.

The Model Portfolio Service is not a financial instrument. The portfolio will consist of financial instruments, which when considered together as the Model Portfolio Service have a target market consistent with the needs of retail clients. This publication is marketing material. It is for information purposes only. The information presented herein is for illustrative purposes only and does not provide sufficient information on which to make an informed investment decision. This document is not intended and should not be construed as an offer, solicitation or recommendation to buy or sell any specific investments or participate in any investment (or other) strategy. It is recommended that potential investors should seek advice concerning the suitability of any investment from their Financial Adviser. Potential investors should be aware that past performance is not an indication of future performance and the value of investments and the income derived from them may fluctuate and they may not receive back the amount they originally invested. The tax treatment of investments depends on each investor's individual circumstances and is subject to changes in tax legislation. The Ongoing Charge Figure is variable and is for example purposes only. The information in this factsheet is for private circulation only and though it is believed to be correct it cannot be guaranteed. No representation or warranty (express or otherwise) is given as to the accuracy or completeness of the information contained in this factsheet and LGT Wealth Management UK LLP ("LGT Wealth Management") and its partners and employees accept no liability for the consequences of your acting upon the information contained herein.

LGT Wealth Management UK LLP is a Limited Liability Partnership registered in England and Wales. Registration number OC329392. LGT Wealth Management is authorised and regulated by the Financial Conduct Authority and is a member of the London Stock Exchange.

Eden Park Investment Management Limited is authorised and regulated by the Financial Conduct Authority. A Registered in England number 10953727. Registered office: The Pavilions, Eden Park, Ham Green, Bristol, BS20 0DD.